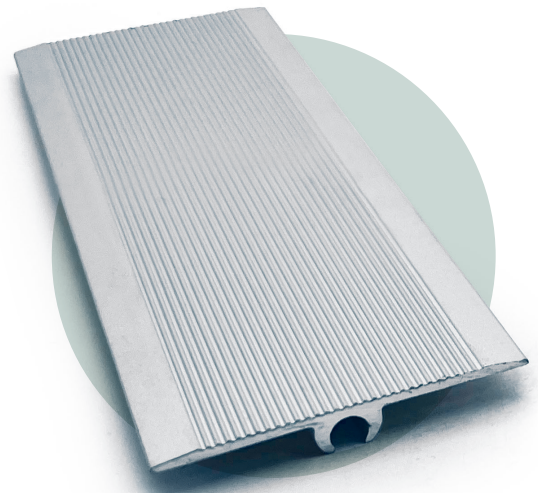
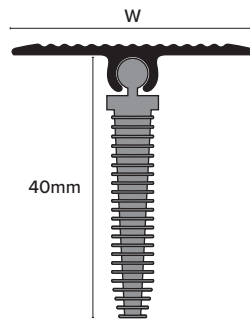


TCS



Product Description

Genesis TCS is an Aluminium Cover and PVC base two part system designed to provide a neat, clean transition from two floor coverings of equivalent heights. It also provides an excellent cover where an expansion gap has been left or is desired between the floor coverings. Simple to install the TCS provides a perfect safe secure finish to the flooring installation.

Technical Details

Genesis Aluminium Profiles are available in different anodised finishes and powder coated finishes - All natural Aluminium (Mill Finish) has an oxide film of approx 0.2 microns, when Mechanically & Chemically polished the anodising process increases this to 5 microns, up-to 20 microns for the Matt finish and 100 for Powder coated.

Aluminium AA 6063 T6 / UNS A96063 anodised to DIN 17611

| | |
|-----|----------|
| Si% | 0.2-0.6 |
| Fe% | 0.35 |
| Cu% | 0.1 |
| Mn% | 0.1 |
| Mg% | 0.45-0.9 |
| Zn% | 0.1 |
| Ti% | 0.1 |
| Cr% | 0.1 |
| Al | Balance |

Maintenance

Genesis TCS profiles do not require any special maintenance. Oxidation films on Aluminium may be removed with a common polishing agent; however, they do reoccur.

Damaged anodised finishes may only be repaired by re-coating. Aluminium must be tested to verify its suitability if chemical stresses are anticipated.

Cementitious materials, in conjunction with moisture, become alkaline. Since aluminium is sensitive to alkaline substances, exposure to the alkali (depending on the concentration and time of exposure) may result in corrosion (aluminium hydroxide formation). Therefore, it is important to remove adhesive or grout residue from visible surfaces. In addition, ensure that the profile is solidly embedded in the setting material and that all cavities are filled to prevent the collection of alkaline water.

The anodised layer creates a finish that retains a uniform appearance during normal use. The surface, however, is susceptible to scratching and wear and may be damaged by tile adhesive, mortar, or grouting material.

Therefore, setting materials must be removed immediately. Otherwise, the description regarding aluminium applies.

Dimensions

Available in 0.92m or 1.85m lengths

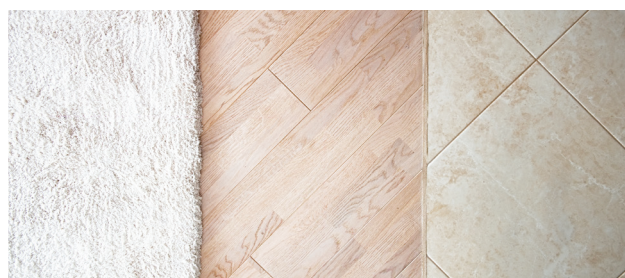
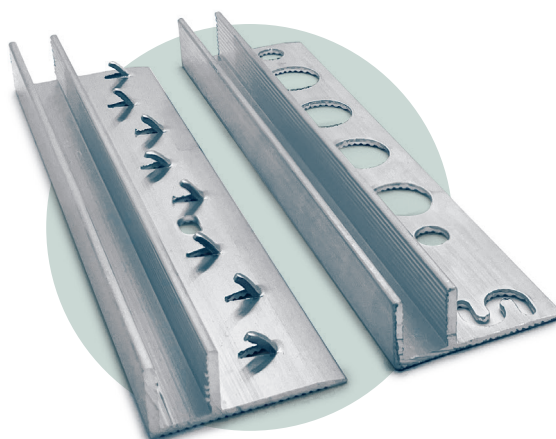
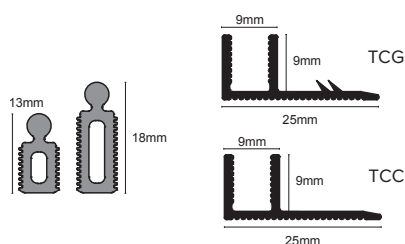
Installation

1. Ensure that the TCS profile width cover the gap between the two floor coverings and that the two floor coverings are level.
2. Simply drill a 6Ø hole in the floor at 25-30cm intervals for 1.85m and 15-20cm for the 0.92m to depth of approx 2-3cm. Starting approximately 5 cm in from each end.
3. Secure the PVC fixing plugs onto the top cover section of the profile, simply slide them along the profile by locking the top square section into the runner on the underside of the profile, lining them up with the pre drilled holes in the floor.
4. Push the screws into the holes, gently apply hand pressure lowering the profile into position and if required tap the cover section with a rubber mallet thus locking the profile into place and securing both floor coverings.

Allied Products

Compatible with MultiFlex Base (see overleaf)

TCC / TCG



Product Description

Genesis TCC / TCG are Aluminium bases compatible with the Fast Fit TCR / TCS cover sections.

TCG Multiflex base for Carpet installation

TCC Multiflex base for all other floor coverings

Each 0.92m base is supplied with 5 large and 5 Standard clips offering numerous height options, simple to install the TCC/TCG provides the perfect safe and secure solution.

Technical Details

Same as overleaf

Maintenance

Same as overleaf

Dimensions

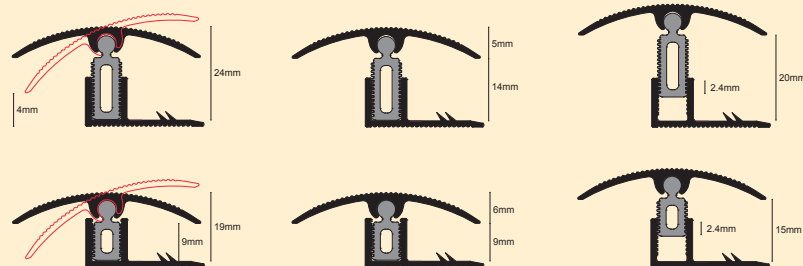
Available in 0.92m lengths and 25mm widths

| Height | Standard | Large |
|--------|----------|---------|
| TCR | 9 - 15mm | 14-20mm |
| TCS | 13-18mm | 18-23mm |

Installation

1. Ensure the TCR / TCS profile sufficiently covers the required gap.
2. Select the TCG base for carpet / TCC for hard floor coverings.
3. Cut profile to required length and secure to the floor with contact adhesive and or mechanical fix.
4. Select the clip that best suits the height variances and slide the appropriate clips onto the underside of the TCR / TCS profile so that they are evenly spaced apart.
5. Position the clip above the Base channel and gently apply pressure, once the clips are secure then a rubber mallet can be used for final assembly.

TCR



TCS

