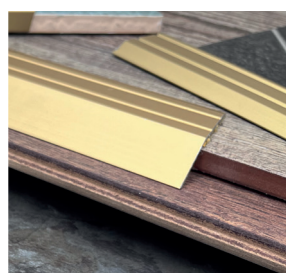
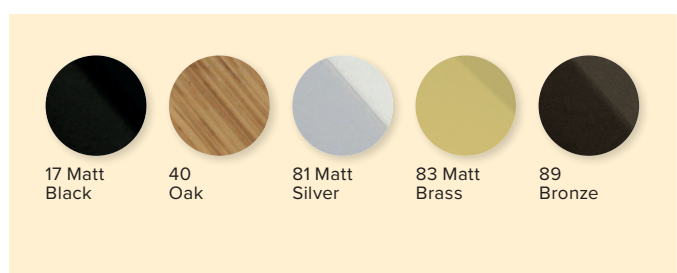
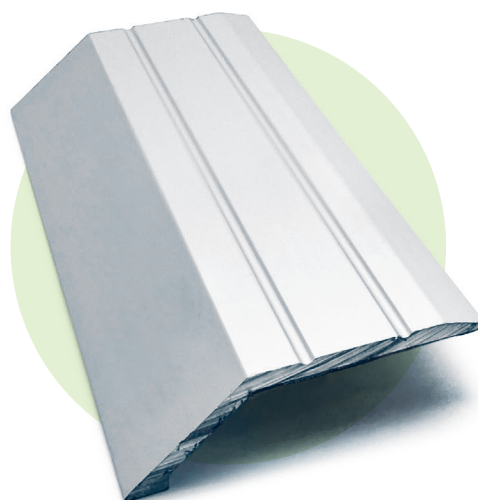
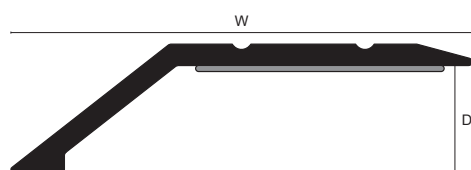


TAS



Product Description

This aluminium retro fit transition profile is incredibly easy to install without mechanical fixings, thanks to its self adhesive strip. The varying depths provide an easy solution of choice when bridging gaps and accommodating height differences in floor finishes. The TAS profile is very suitable for use with hard and smooth floor coverings.

Technical Details

Genesis Aluminium Profiles are available in different anodised finishes and powder coated finishes - All natural Aluminium (Mill Finish) has an oxide film of approx 0.2 microns, when Mechanically & Chemically polished the anodising process increases this to 5 microns, up-to 20 microns for the Matt finish and 100 for Powder coated.

Aluminium AA 6063 T6 / UNS A96063 anodised to DIN 17611

| | |
|-----|----------|
| Si% | 0.2-0.6 |
| Fe% | 0.35 |
| Cu% | 0.1 |
| Mn% | 0.1 |
| Mg% | 0.45-0.9 |
| Zn% | 0.1 |
| Ti% | 0.1 |
| Cr% | 0.1 |
| Al | Balance |

Maintenance

These profiles do not require any special maintenance. Oxidation films on Aluminium may be removed with a common polishing agent; however, they do reoccur.

Damaged anodised finishes may only be repaired by re-coating. Aluminium must be tested to verify its suitability if chemical stresses are anticipated.

Cementitious materials, in conjunction with moisture, become alkaline. Since aluminium is sensitive to alkaline substances, exposure to the alkali (depending on the concentration and time of exposure) may result in corrosion (aluminium hydroxide formation). Therefore, it is important to remove adhesive or grout residue from visible surfaces. In addition, ensure that the profile is solidly embedded in the setting material and that all cavities are filled to prevent the collection of alkaline water.

The anodised layer creates a finish that retains a uniform appearance during normal use. The surface, however, is susceptible to scratching and wear and may be damaged by tile adhesive, mortar, or grouting material.

Therefore, setting materials must be removed immediately. Otherwise, the description regarding aluminium

Dimensions

Options of 38 (W) x 8 (D) mm, 43 (W) x 10 (D) mm and 50 (W) x 14 (D) mm, both available in lengths of 0.9 and 2.7m

Installation

1. Clean surface thoroughly ensuring removal of any contamination that may prevent the adhesion tape.
NB it is important to remember that the safety strip will only stick to surfaces that are smooth and free from dirt and grease.
2. Cut to length, remove release paper from self-adhesive strip.
3. Place the profile into position, apply pressure along the full length to ensure adhesion. Do not attempt to re-position once the initial adhesion has taken place.