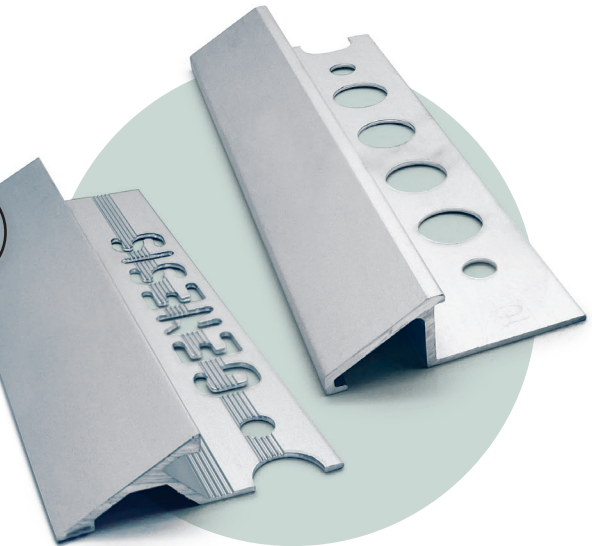
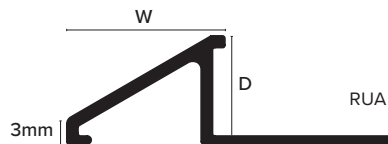
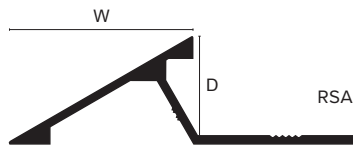


RSA / RUA



Product Description

These Aluminium ramps are designed to provide a neat, clean transition from two floor coverings of different heights. Simple to install and providing a perfect safe secure finish to the flooring installation.

The RSA / RSU profiles are deemed suitable for vehicle access if the installation instructions are followed.

Technical Details

Genesis Aluminium Profiles are available in different anodised finishes and powder coated finishes - All natural Aluminium (Mill Finish) has an oxide film of approx 0.2 microns, when Mechanically & Chemically polished the anodising process increases this to 5 microns, up-to 20 microns for the Matt finish and 100 for Powder coated.

Aluminium AA 6063 T6 / UNS A96063 anodised to DIN 17611

Si%	0.2-0.6
Fe%	0.35
Cu%	0.1
Mn%	0.1
Mg%	0.45-0.9
Zn%	0.1
Cr%	<0.01
Al	Balance

Maintenance

These profiles do not require any special maintenance. Oxidation films on Aluminium may be removed with a common polishing agent; however, they do reoccur.

Damaged anodised finishes may only be repaired by re-coating. Aluminium must be tested to verify its suitability if chemical stresses are anticipated.

Cementitious materials, in conjunction with moisture, become alkaline. Since aluminium is sensitive to alkaline substances, exposure to the alkali (depending on the concentration and time of exposure) may result in corrosion (aluminium hydroxide formation). Therefore, it is important to remove adhesive or grout residue from visible surfaces. In addition, ensure that the profile is solidly embedded in the setting material and that all cavities are filled to prevent the collection of alkaline water.

The anodised layer creates a finish that retains a uniform appearance during normal use. The surface, however, is susceptible to scratching and wear and may be damaged by tile adhesive, mortar, or grouting material.

Therefore, setting materials must be removed immediately. Otherwise, the description regarding aluminium

Dimensions

RSA is Available in 2.5m lengths and 10mm and 12mm depths.

RUA is Available in 2.5m lengths and 10mm and 12mm depths.

Installation

1. Ensure that the profile depth (D) is correct for the flooring material.
2. Line up the profile along the joint between the two floor coverings and cut to length desired.
3. Press the perforated anchoring leg of the profile onto the floor and align, mechanical fix if required or simply push into the floor covering adhesive allowing this to perforate the flange of the profile.
4. Use additional adhesive over the perforated anchoring leg to ensure full coverage if necessary.
5. Solidly embed the tiles so that the tiled surface is flush with the top of the profile. The profile should not be higher than the tiled surface, but rather up to approximately 1 mm lower.
6. Fill the joint completely with grout.