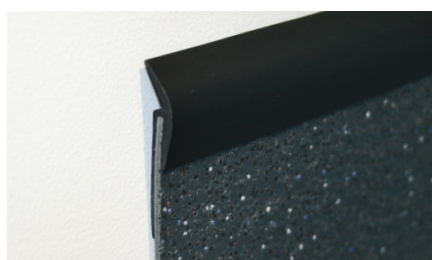
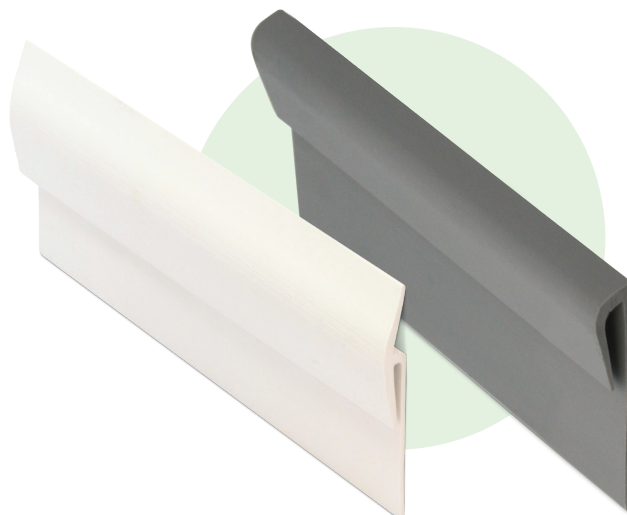
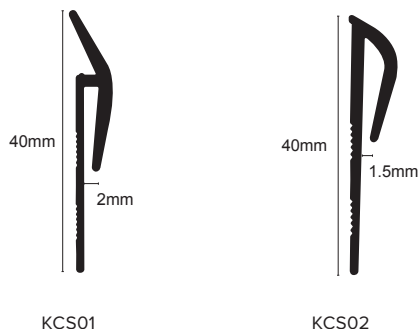


KCS



Product Description

Genesis KCS is a flexible PVC capping seal used to finish the top of a resilient floor covering where it has been covered up the wall. Capping seals are usually used in conjunction with a cover former.

Dimensions

Available in 2m lengths.

Maintenance

Regular maintenance will prevent the buildup of dirt and grease. Under no circumstances should degreasers of any type be used on this profile. Similarly floor cleaners/ sanitizers which contain hydrocarbons or citrus based agents should not be used. Floor sealants, polishes should not under any circumstances be applied to PVC, the use of such aggressive detergents could result in colour fade within the PVC.

Daily brush down the profile using a soft bristled brush and remove any dust by wiping with a damp cloth.

Installation

Preparation is essential to a good quality installation. Surfaces must be sound, smooth, dry, and free from contaminants which will affect adhesion. Wall surfaces should be free from any previous coverings, linings or adhesive residues used to fix them. Paint films and any mould must be removed and the affected surface treated correctly. The capping seal should be allowed to acclimatise for 24 hours prior to installation at an ambient temperature of 18°C.

1. Mark the position of the top of the capping seal on the wall and join together using a chalk line.
2. Apply a proprietary contact adhesive to the wall and back of the capping seal.
3. Allow the adhesive to become touch dry.
4. Once dry, bring both surfaces together and apply even pressure along the capping seal ensuring any air bubbles are removed and full contact is made with the wall.
5. All internal corners should be mitre cut. External corners may be mitre cut or wrapped around

Technical Details

UPVC is particularly suitable for a wide range of application due to its excellent chemical resistance, however note the following:

Not recommended for use above 60°C resistant to most oils, alcohols, petrol and fats. It is unsuitable for use in contact with aromatic and chlorinated hydrocarbons, ketones, nitro compounds, esters and cyclic ethers with cause some swelling.

Property	Test Method	Result
Vicat Softening Point	ISO 306 PN-EN ISO 306: 2014-02	79.8±20°C
Shore hardness	PN-EN ISO 868: 2005	70±5 ShD
Charpy impact strength	PN-EN ISO 179-1/1eC:2010	1.7 C* kJ/m ² <small>*the test is made from the raw material, not from the final product</small>
Maximum stress, durability	PN-EN ISO 527-1:2012, PN-EN ISO 527-2:2012	35.4 MPa
Colour variation	L*a*b	Conform with defined colour referential ($\Delta E \leq 4$)